

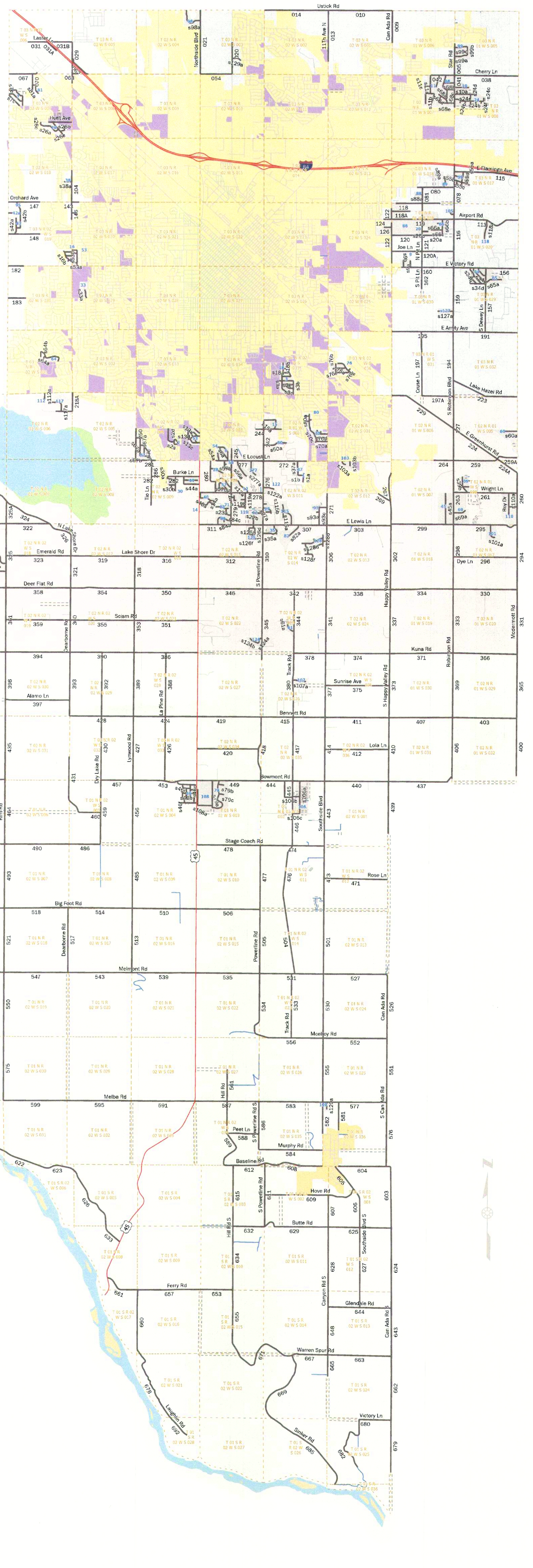
Nampa Highway District No. 1 Official Map, 2024

In accordance with Idaho Code 40-202 (Designation of Highways and Public Rights-of-Way) and 40-1310 (Powers and Duties of Highway District Commissioners), this map is hereby adopted as the Official Map of the Nampa Highway District No. 1 this ____ day of _____, 2024.

Dick Smith
 Dick Smith, Chairman

Randy Noble
 Randy Noble, Vice-Chairman

Bryce D. Millar
 Bryce D. Millar, Secretary/Treasurer



- State Highway
- NHD Roads
- Roads Not Under NHD Jurisdiction
- Unmaintained ROW
- Private Roads
- Public Land Survey System
- Subdivisions
- Enclaved Areas
- Island
- River/Lake
- Lake Overflow
- Sub-District 3
- Sub-District 2
- Sub-District 1
- Melba City Limits
- Nampa City Limits